



HONG KONG – Your super-connector to Asia

Kathy Chan
Director

Hong Kong Economic and Trade Office (Toronto)

December 2016

One Country, Two Systems

- A Special Administrative Region of China
- High degree of autonomy
- Rule of law, practise common law
- Independent judiciary
- Both English and Chinese are official languages

Low and simple tax system

- Personal income: 15% (max.)
- Corporate income: 16.5%
- No GST / VAT
- No global taxation
- Comprehensive Double Taxation Agreement with Canada

Ideal geographical location





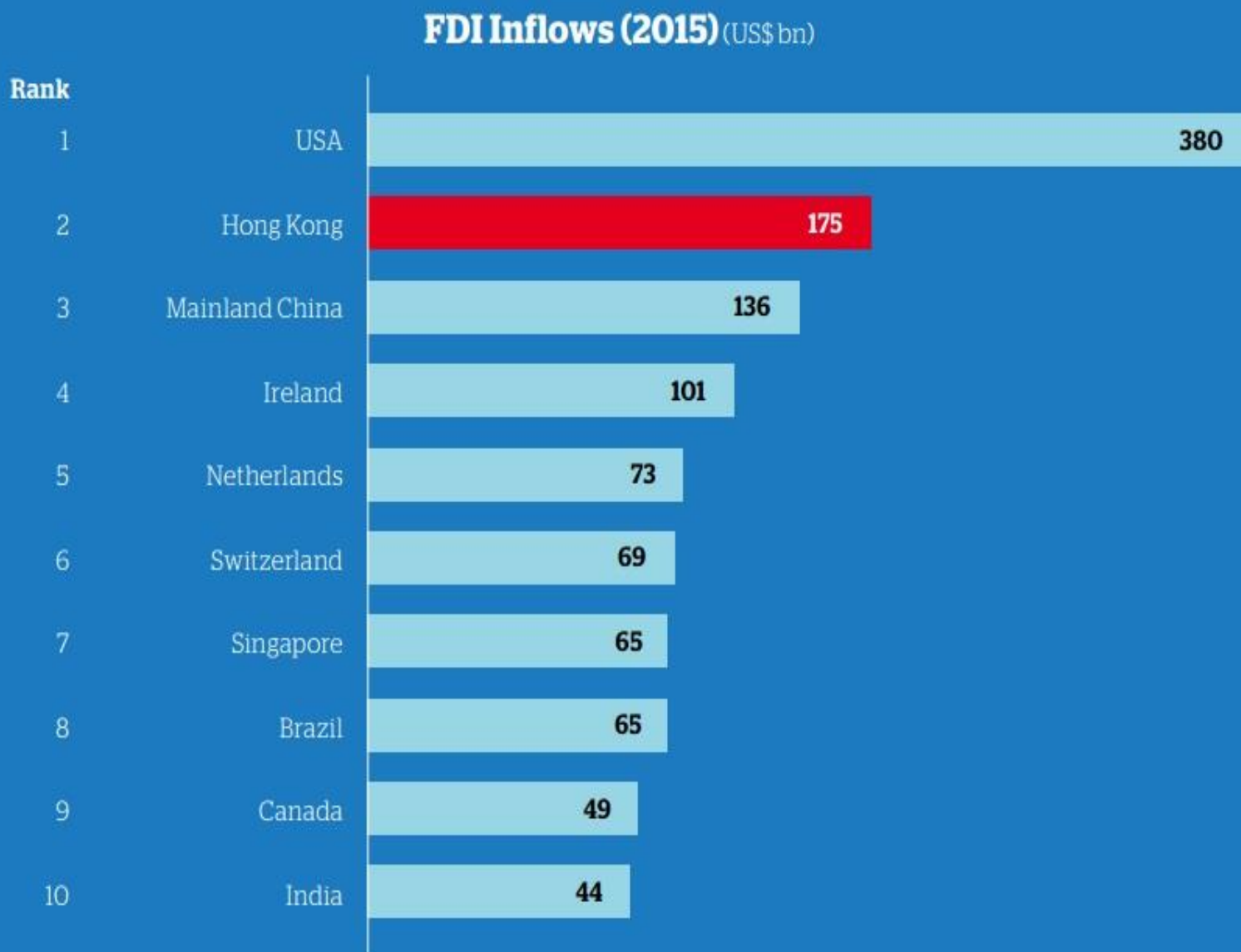
World's Freest Economy since 1995

- The Heritage Foundation

World's most competitive economy (2016)

- IMD World Competitive Yearbook

Global Rankings in FDI Inflows



Canada-HK relations

- Canada's 8th largest merchandise export market
- C\$7,302 million direct investment in HK in 2015 (+38.9%)
- C\$4,000 million worth of goods traded between Canada and Mainland China was routed through HK.
- Around 100 Canadian companies in HK

An aerial photograph of Hong Kong, showing a dense urban landscape with numerous skyscrapers and residential buildings. The city is situated on a peninsula, with a large body of water (Victoria Harbour) in the foreground and mountains in the background. The sky is blue with some clouds. A green semi-transparent oval is overlaid on the center of the image, containing the text.

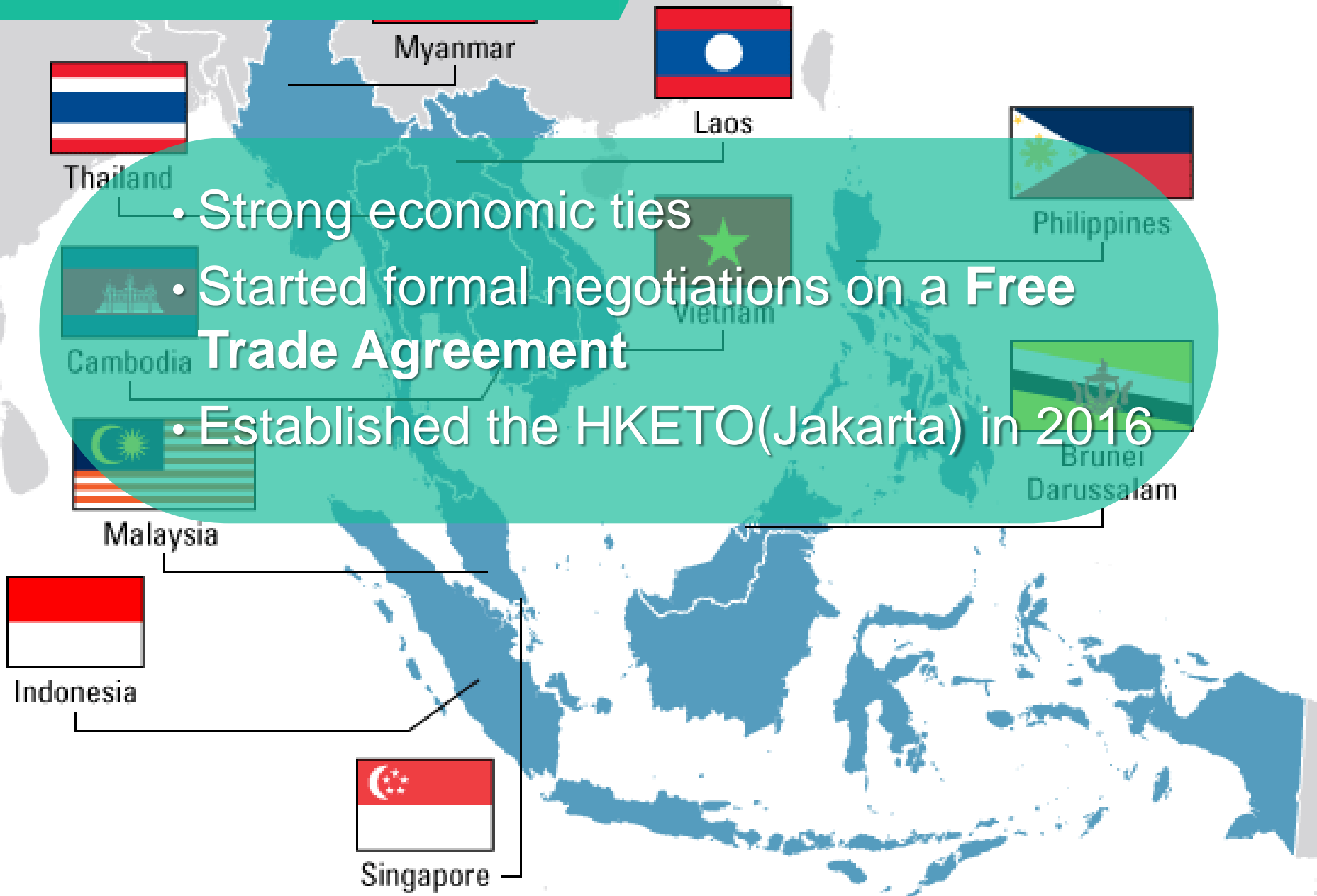
Hong Kong – Your Super-
connector to Asia,
including Mainland China



Closer Economic Partnership Arrangement (CEPA)

- Tariff free treatment for goods of Hong Kong origin
- Preferential access for Hong Kong service suppliers
- A supplementary agreement signed in 2015 – fully / partially open up 153 sectors to HK services industry (95.6% of all the 160 WTO services trade sectors)
- Nationality-neutral
- Most favoured treatment

ASEAN



- Strong economic ties
- Started formal negotiations on a **Free Trade Agreement**
- Established the HKETO(Jakarta) in 2016

Belt and Road

>60
countries

4.4
billion
population

US\$22
Trillion
gross economic
volume

Central and
Eastern Europe

Central and
West

Middle
East

South Asia

Southeast
Asia

China



Policy Coordination



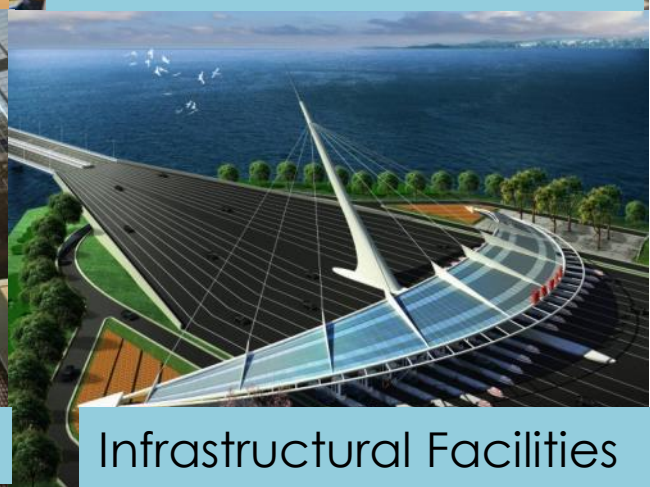
Trade & Investment



People-to-People Bond



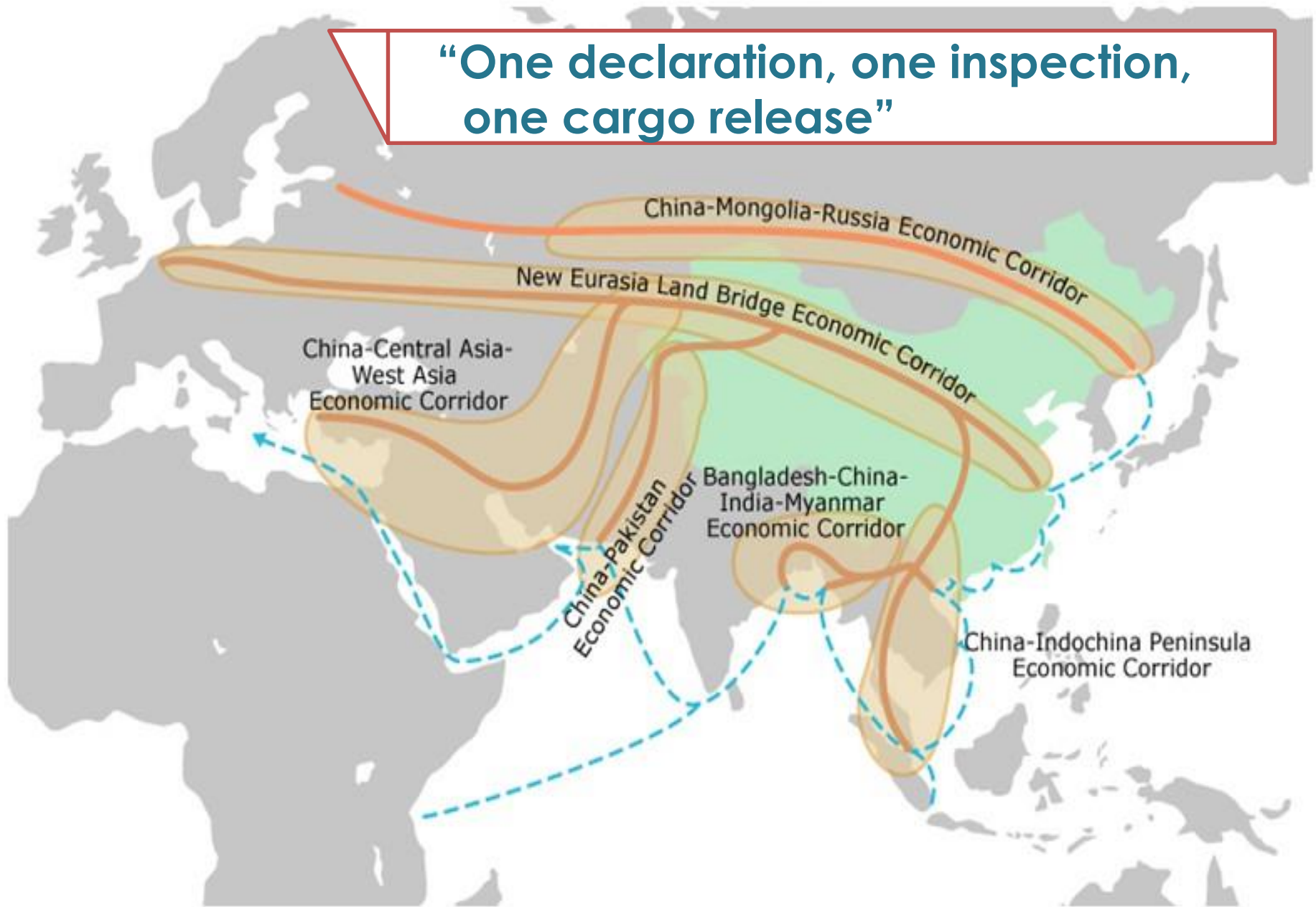
Financial Integration



Infrastructural Facilities

The Belt and Road Initiative: Six Economic Corridors Spanning Asia, Europe and Africa

“One declaration, one inspection,
one cargo release”



THE WALL STREET JOURNAL.

[Home](#)[World](#)[U.S.](#)[Politics](#)[Economy](#)[Business](#)[Tech](#)[Markets](#)[Opinion](#)[Arts](#)[Life](#)[Real Estate](#)

🔑 **Dilma Rousseff**
Ousted in Brazil
Impeachment Vote



🔑 **China Will Try to**
Deflect G-20
Complaints at
Summit



🔑 **Standoff With**
Iran Inflames Anti-
Shiite Feelings in
Saudi Arabia

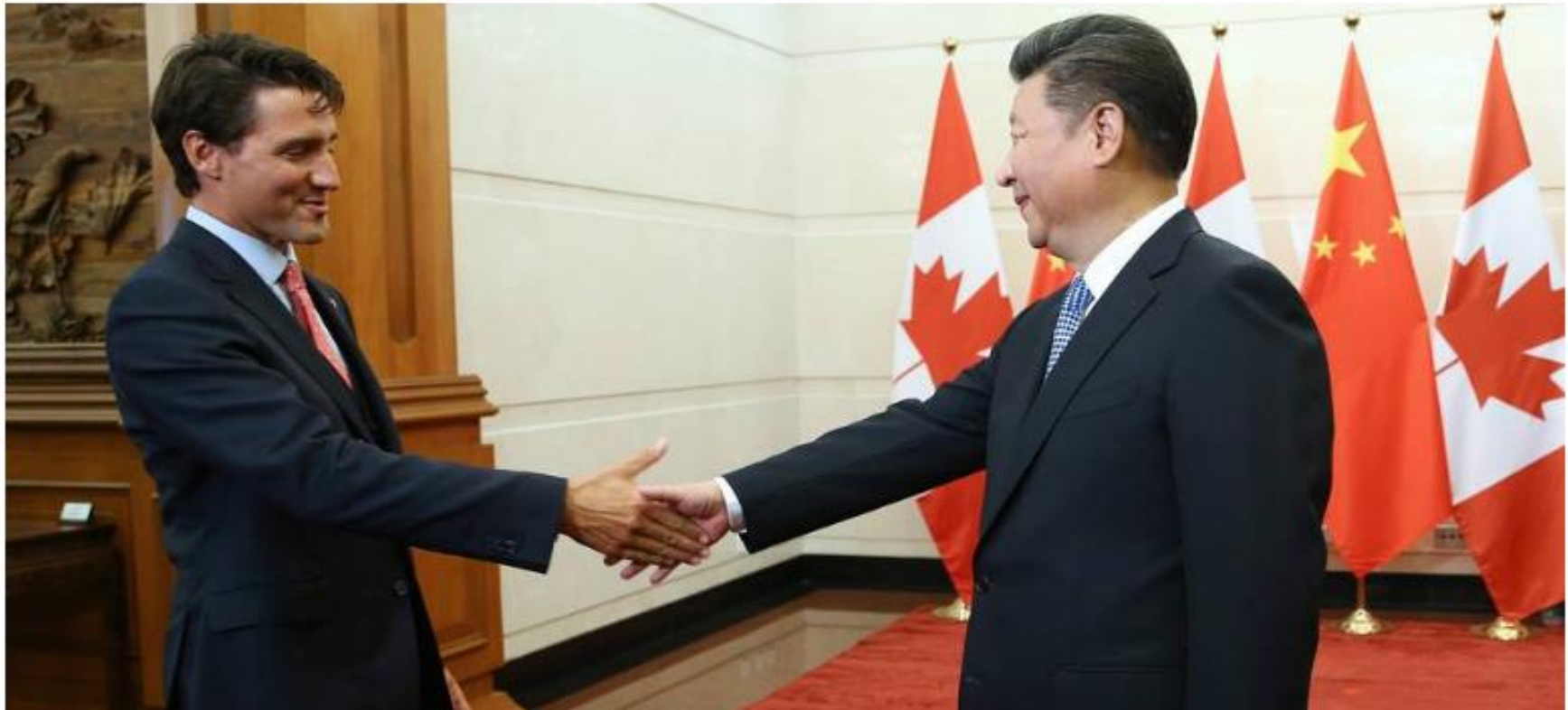


🔑 **Kurds Carry**
a Home in Syria
Testing U.S. Ties
Turkey

WORLD

Canada Applies to Join AIIB

First North American country to do so



Asia in 2030

53%

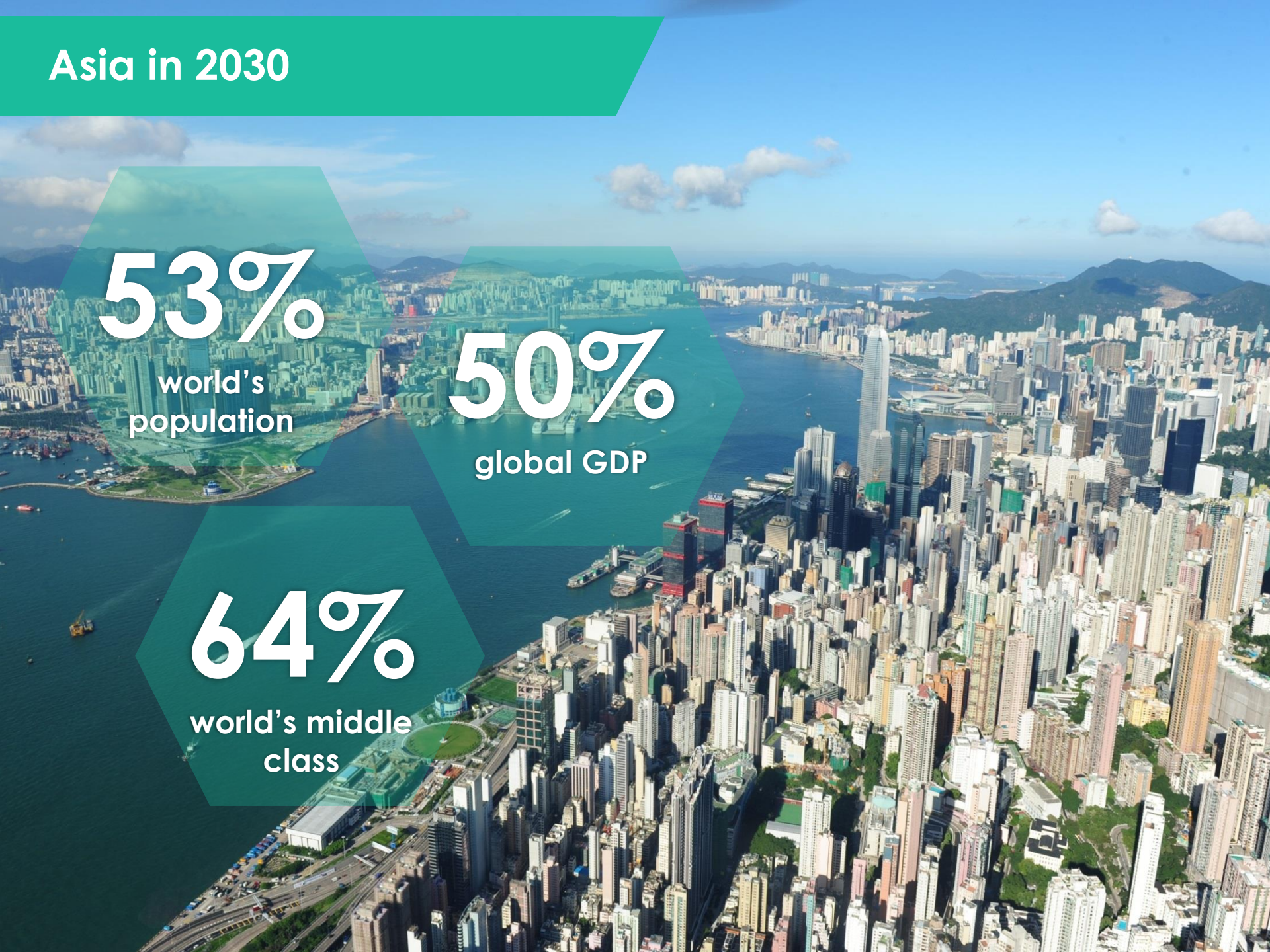
world's
population

50%

global GDP

64%

world's middle
class



An aerial photograph of the Hong Kong skyline, featuring numerous skyscrapers and the Victoria Harbour. A large teal oval is superimposed over the center of the image, containing white text. The background shows a dense urban landscape with various building styles, including modern glass-fronted towers and older structures. The water of the harbour is visible, with some ships and a bridge in the distance. The overall tone is professional and modern.

Hong Kong

Your super-connector to Asia



Thank You